

planning
transport
design
environment
infrastructure

Document 3.1 – ES Volume 2

Appendix 11.8: WKN External Lighting

Wheelabrator Kemsley (K3 Generating Station) and Wheelabrator Kemsley North (WKN) Waste to Energy Facility DCO

September 2019 -Submission Version

PINS ref: EN010083



Notes

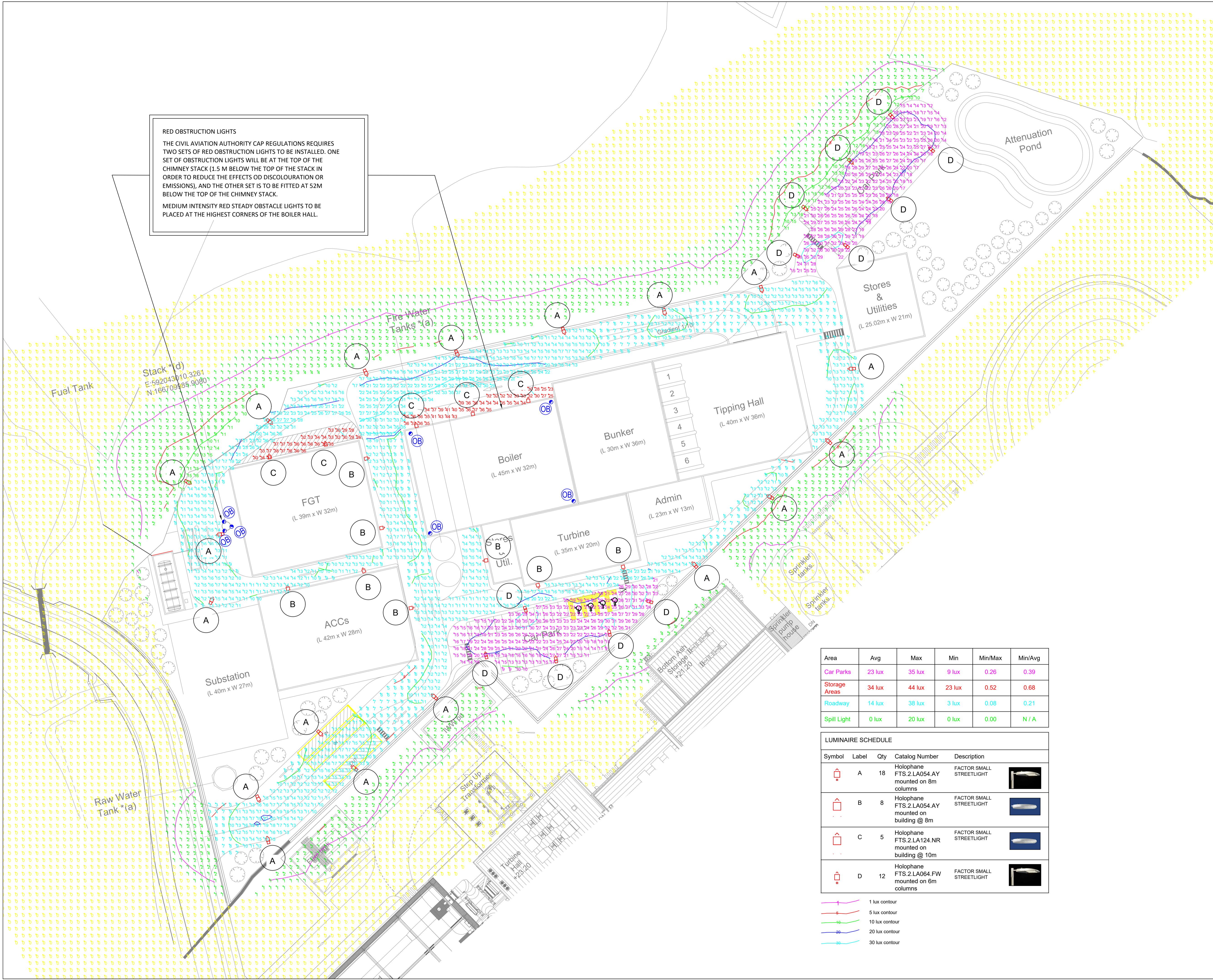
- This drawing has been prepared in accordance with the scope of RPS's appointment with its client and is subject to the terms and conditions of that appointment. RPS accepts no liability for any use of this document other than by its client and only for the purposes for which it was prepared and provided.
- If received electronically it is the recipient's responsibility to print to correct scale. Only written dimensions should be used.

Safety, Health & Environment Information

In addition to the hazards/risks normally associated with the types of work detailed on this drawing take note below. It is assumed that all works on this drawing will be carried out by a competent contractor, working, where appropriate, to an appropriate method statement.

Construction Risks	Maintenance/Cleaning Risks	Demolition/Adaption Risks
Installing lighting at high level to building and stack.	Cleaning obstruction lighting.	Disconnection and safe removal of lighting for replacement or disposal.

RED OBSTRUCTION LIGHTS
 THE CIVIL AVIATION AUTHORITY CAP REGULATIONS REQUIRES TWO SETS OF RED OBSTRUCTION LIGHTS TO BE INSTALLED. ONE SET OF OBSTRUCTION LIGHTS WILL BE AT THE TOP OF THE CHIMNEY STACK (1.5 M BELOW THE TOP OF THE STACK IN ORDER TO REDUCE THE EFFECTS OF DISCOLOURATION OR EMISSIONS), AND THE OTHER SET IS TO BE FITTED AT 52M BELOW THE TOP OF THE CHIMNEY STACK.
 MEDIUM INTENSITY RED STEADY OBSTACLE LIGHTS TO BE PLACED AT THE HIGHEST CORNERS OF THE BOILER HALL.



Rev	Status	Description	Date	Initial	Checked

Area	Avg	Max	Min	Min/Max	Min/Avg
Car Parks	23 lux	35 lux	9 lux	0.26	0.39
Storage Areas	34 lux	44 lux	23 lux	0.52	0.68
Roadway	14 lux	38 lux	3 lux	0.08	0.21
Spill Light	0 lux	20 lux	0 lux	0.00	N/A

Symbol	Label	Qty	Catalog Number	Description
	A	18	Holophane FTS.2.LA054.AY mounted on 8m columns	FACTOR SMALL STREETLIGHT
	B	8	Holophane FTS.2.LA054.AY mounted on building @ 8m	FACTOR SMALL STREETLIGHT
	C	5	Holophane FTS.2.LA124.NR mounted on building @ 10m	FACTOR SMALL STREETLIGHT
	D	12	Holophane FTS.2.LA064.FW mounted on 6m columns	FACTOR SMALL STREETLIGHT

- 1 lux contour
- 5 lux contour
- 10 lux contour
- 20 lux contour
- 30 lux contour



Highfield House, 5 Ridgeway, Quinton Business Park,
 Birmingham B32 1AF
 T: 0121 213 5500 E: rpsbm@rpsgroup.com F: 0121 213 5502

Client **WTI**
 Project **K3/WKN**
 Title **Proposed External Lighting Layout**
 Purpose of Issue **Planning** Drawn By **GF** PM/Checked by **RP**
 Job Ref **BRM08614** Scale @ **A1** Date Created **November 2018**
 Drawing Number **WKN-RPS-XX-XX-DR-E-6301** Status **S0** Rev **P01**